

## A Space Center Property

**For Lease**



### Key Distances:

I-240 . . . . . 9 miles  
 I-40 . . . . . 15 miles  
 Memphis Int'l Airport . . . . . 8 miles

### Air Freight Hubs

FedEx . . . . . 10 miles  
 UPS . . . . . 9 miles

### Intermodal Terminals

BNSF . . . . . 11 miles  
 CN . . . . . 18 miles  
 UP . . . . . 29 miles

**224,000 SF Available**

## Space Center DC

## 601 Expressway Drive Horn Lake, MS 38637



**SPACE CENTER**

**JIM RYDEN**

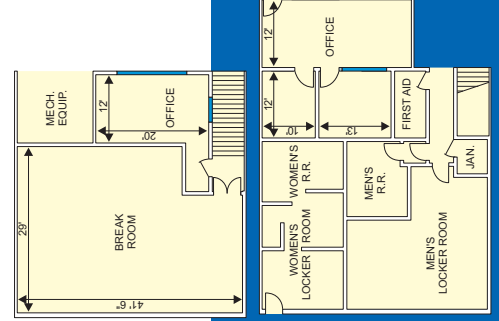
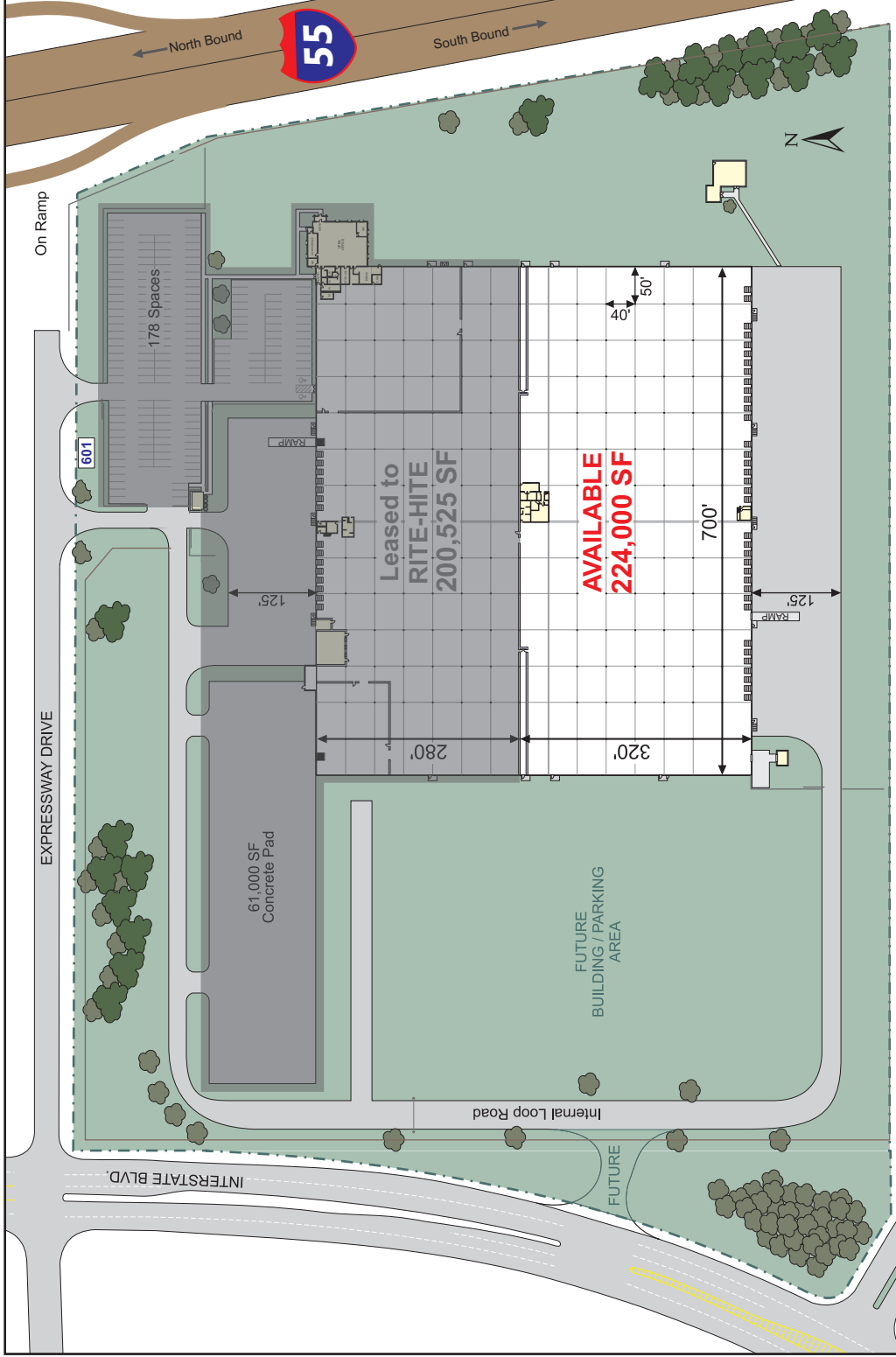
**770-551-9940**

[jryden@spacecenterinc.com](mailto:jryden@spacecenterinc.com)

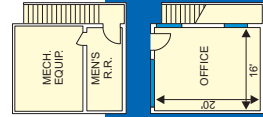
# SPECIFICATIONS

Size .....	224,000 SF
Office .....	4,110 SF
Dimensions .....	700' x 320'
Dock Doors .....	36 - 9' x 10'
Drive-in Door .....	1 - 12' x 14'
Truck Court .....	125'
Clear Height .....	22'
Column Spacing .....	50' x 40'
Electric .....	2,000 amps
Lighting .....	400w MH
Fire Protection .....	Class IV
Roof .....	EPDM

Property Taxes .....	None through 2071
Municipality .....	City of Horn Lake
Use .....	Light Industrial
Site .....	37.8 Acres

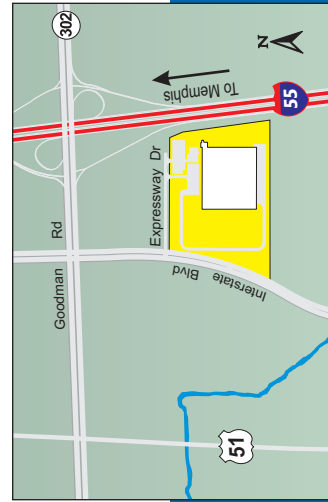


## OFFICE LAYOUTS



## UPPER LEVEL

## LOWER LEVEL



## CONTACT

**JIM RYDEN**  
770-551-9940  
jryden@spacecenterinc.com



SPACE CENTER

601 Expressway Drive, Horn Lake, MS 38637